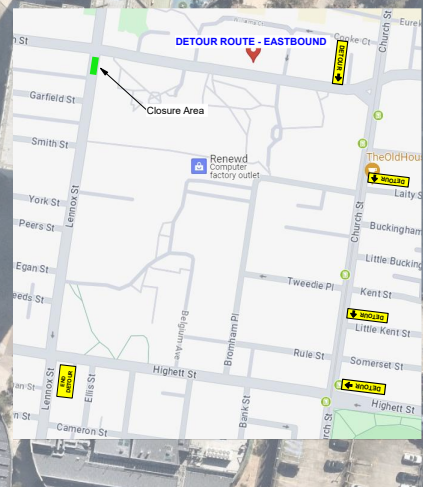
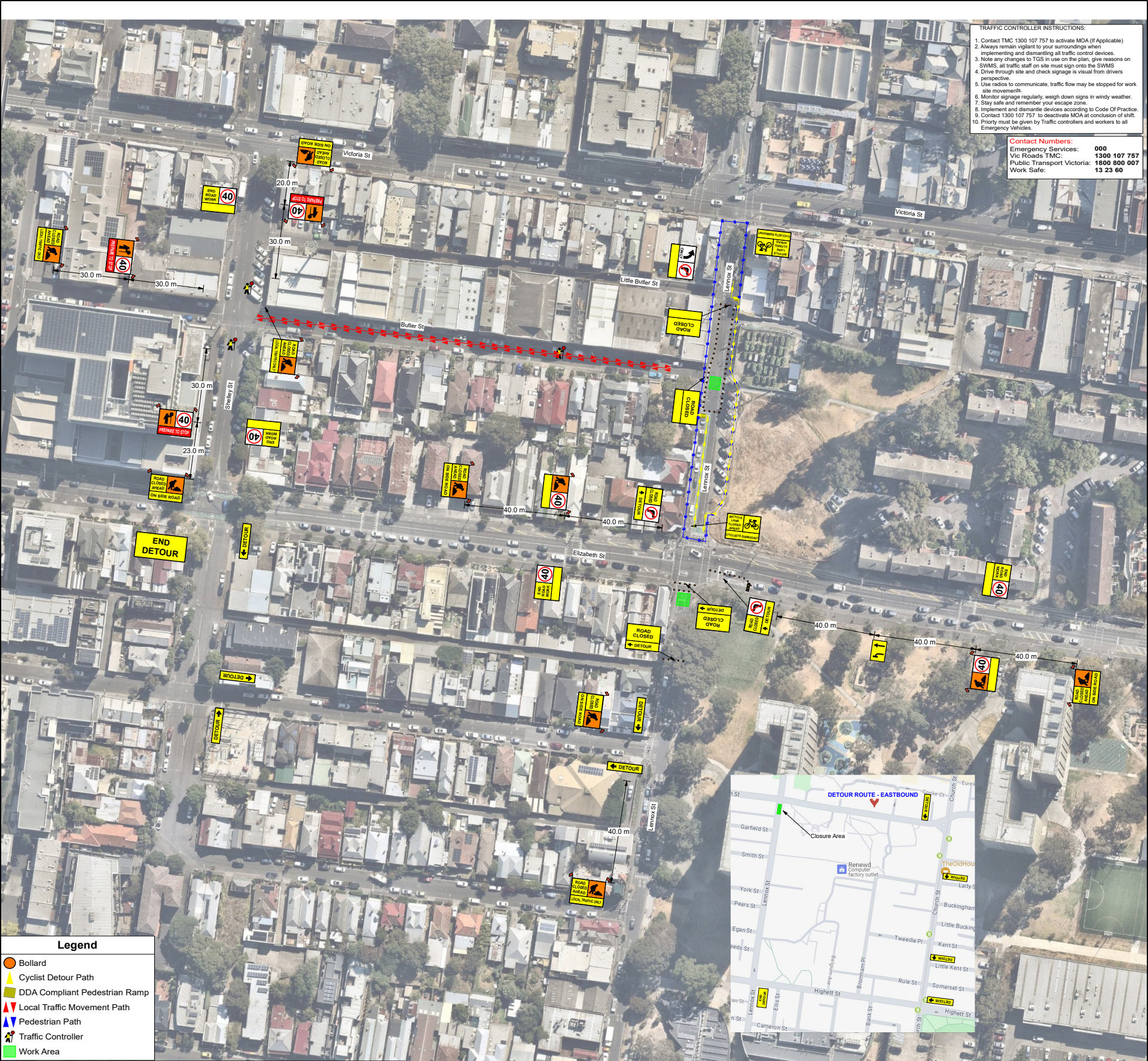


TRAFFIC CONTROLLER INSTRUCTIONS:

1. Contact TMC 1300 107 757 to activate MOA (if Applicable)
2. Always remain vigilant to your surroundings when implementing and dismantling all traffic control devices.
3. Note any changes to TGS in use on the plan, give reasons on SWMS, all traffic staff on site must sign onto the SWMS.
4. Drive through site and check signage is visible from drivers perspective.
5. Use radios to communicate, traffic flow may be stopped for work site movements.
6. Monitor signage regularly, weigh down signs in windy weather.
7. Stay safe and remember your escape zone.
8. Implement and dismantle devices according to Code Of Practice.
9. Contact 1300 107 757 to deactivate MOA at conclusion of shift.
10. Priority must be given by Traffic controllers and workers to all Emergency Vehicles.

Contact Numbers:
Emergency Services: 000
Vic Roads TMC: 1300 107 757
Public Transport Victoria: 1300 800 007
Work Safe: 13 23 60



Legend

- Bollard
- ▲ Cyclist Detour Path
- ▲ DDA Compliant Pedestrian Ramp
- ▲ Local Traffic Movement Path
- ▲ Pedestrian Path
- ▲ Traffic Controller
- ▲ Work Area

27922-RC-001-REV4 - Lennox St & Butler St - PART 1

MetroCivil
(M) 0420 920 301
(W) www.metrocivil.com.au

BARLEYS
Traffic Management Solutions

Ph: (03) 9088 7592
www.barleys.net.au

Traffic controller instructions:

- Always remain vigilant in your duties and surroundings when implementing, conducting and dismantling traffic control
- Ensure traffic control devices remain in the correct location throughout the shift.
- Contact the VicRoads TMC to activate and de-activate MoA's as required
- Stay Safe and always have an escape route in place
- Traffic Controllers must ensure effective communication (UHF) is maintained at all times

This TGS has been prepared by competent & qualified planners in consultation with workers and managers.

This TGS complies with all relevant codes, standards and guidelines incl. VicRoads Code of Practice 2010 The Road Management Act 2004 and AS1742.3-2019 & AGTM Parts 1-10

- This TGS may be amended onsite to suit additional conditions/hazards and shall be documented as required.
- Barleys TM holds no liability of this TGS if implemented outside of Barleys TM.

Client: Metro Civil

Work Description: Utility Works

Municipality: Yarra City Council

Author: Andrew K

Author Contact No: 0418 994 104

Author Qualification ID: 68308

Date Drawn: 20/08/2024

Client contact: Zee Adams

Location: Lennox St & Butler St, Richmond

Melways Reference: 44 E7

Revision: 4

Emergency contact details:

Emergency services: 000

Barleys Traffic Management: 03 9088 7592

Term: Short

Traffic arrangement: Road Closure

Road type: Category 1

Existing speed limit: 40 km/h

Bollard spacings:

Taper: 3.0m centres max

Longitudinal run: 6.0m centres max

In-line with Department of Transport initiative to remove traffic controllers from the side of the road, portable traffic lights and relevant signage may be used in place of traffic controllers

or
 or

All portable traffic lights to be 'type approved' and come with compliance certificate

N

Plan Scale

Not to scale